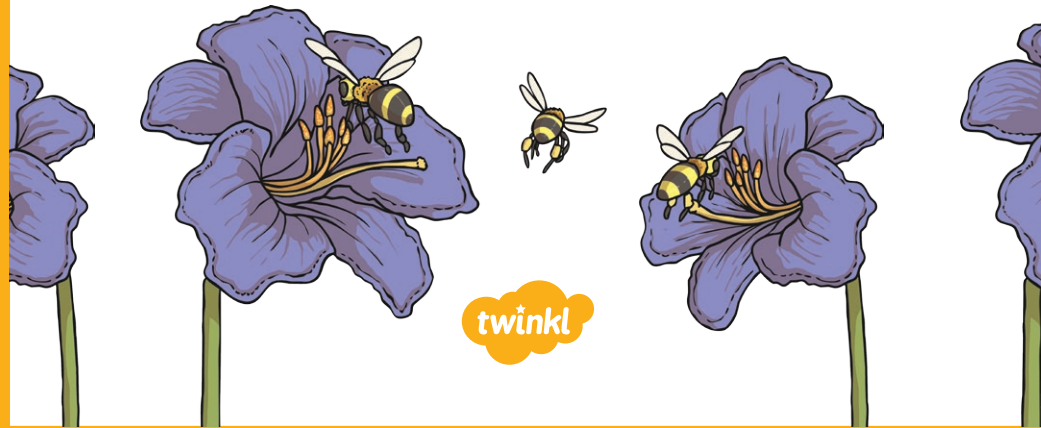


Common Pollinators

Fact Cards



Common Pollinators

- Birds visit flowers during the daytime.
- Birds use their beaks to reach inside flowers to drink nectar.
- Birds don't rest on flower petals to eat.
- Pollen is left on the bird's head and neck, and is then transferred to the next flower it visits.
- Birds have good vision but a weak sense of smell.
- Birds are attracted to bright colours, like orange and red.



Common Pollinators

- Bees visit flowers during the daytime.
- Bees land on the flower petals to gather nectar.
- Bees are attracted to sweet smelling flowers.
- Bees look for bright colours, like violet, blue, and yellow.
- Bees can see colours in the UV range.



Common Pollinators

- Bats visit flowers during the night-time.
- Bats feed on the nectar deep inside the flower.
- Bats are attracted to large flowers with strong smells of fermenting or fruit.
- Bats like to visit flowers that are white, green or purple because they are visible at night.
- The face and head of bats become covered with pollen, which is then transferred to the next flower.



Common Pollinators

- Butterflies visit flowers during the day. They prefer early morning when nectar is quite watery.
- Butterflies use their long mouth parts to reach inside flowers and their drink nectar.
- Butterflies sit on flower petals when they eat.
- Butterflies are attracted to flowers that have bright colours, like purple, red or orange.
- Butterflies have good vision but a poor sense of smell.



twinkl.com

Common Pollinators

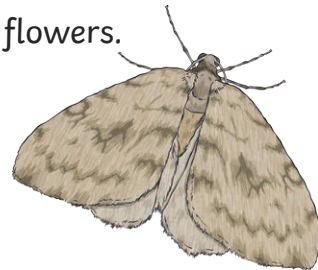
- Flies visit flowers during the daytime.
- Flies land on the flower petals.
- Flies are like flowers that smell similar to rotting meat because they lay their eggs on rotten meat.
- Flies prefer flowers that are low to the ground.
- Flies like flowers that are pale and dull, dark brown or purple.



twinkl.com

Common Pollinators

- Moths visit flowers during the night-time.
- Moths use their long mouth parts to reach inside flowers to drink nectar.
- Moths are attracted to flowers that are pale and dull red, purple, pink or white.
- Moths are attracted to sweet smelling flowers.



twinkl.com

Common Pollinators

- Beetles visit flowers that are open during the daytime.
- Beetles will eat their way through petals and other floral parts.
- They are attracted to flowers that are white or green.
- Beetles are attracted to flowers that smell spicy, sweet or fermented.



twinkl.com